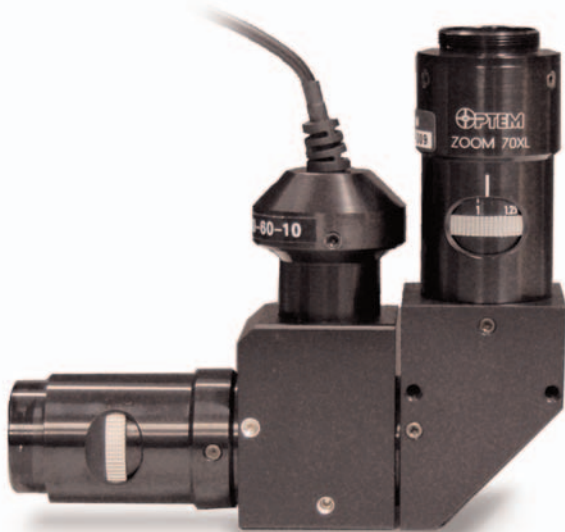


# Long-Working, Right-Angle Module

## A New Turn for Your Optem Lens System



- Introduce a 90° turn along your optical axis at mid-body point of your Optem Zoom 70XL or FMOS Lens System
- Compact design integrates with all Zoom 70XL, FMOS, and Zoom 125C Lower Function Modules for added versatility
- Maintains inherent working distance of your Lens System
- Mates with Fine Focus Lower Objective Modules or connects directly to Objectives for compact high-magnification configurations



29-90-66-000 .....Long-Working, Right-Angle Module

299067-310 .....Coaxial Illumination Block

299066-302 .....M25 x 0.75 Thread Auxiliary Lens Coupler

299066-303 .....Optem/Mitutoyo Objectives Coupler

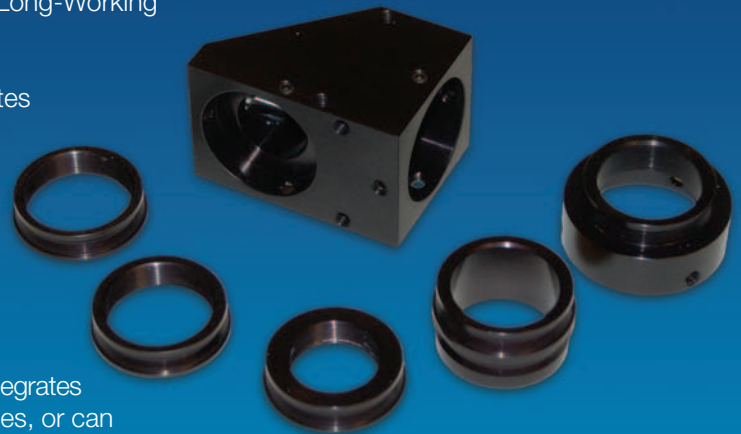
299066-304 .....FMOS/Zoom 70XL Lower Module Coupler

299066-305 .....Nikon/Olympus Objectives RMS Thread Coupler

299066-306 .....Zoom 125C Lower Module Coupler

When you require 90° configuration flexibility for your Optem Zoom 70XL or FMOS Lens system without sacrificing working distance or functional versatility, make the right turn with the NEW Optem Long-Working Distance, Right-Angle Adapter Module (29-90-66-000).

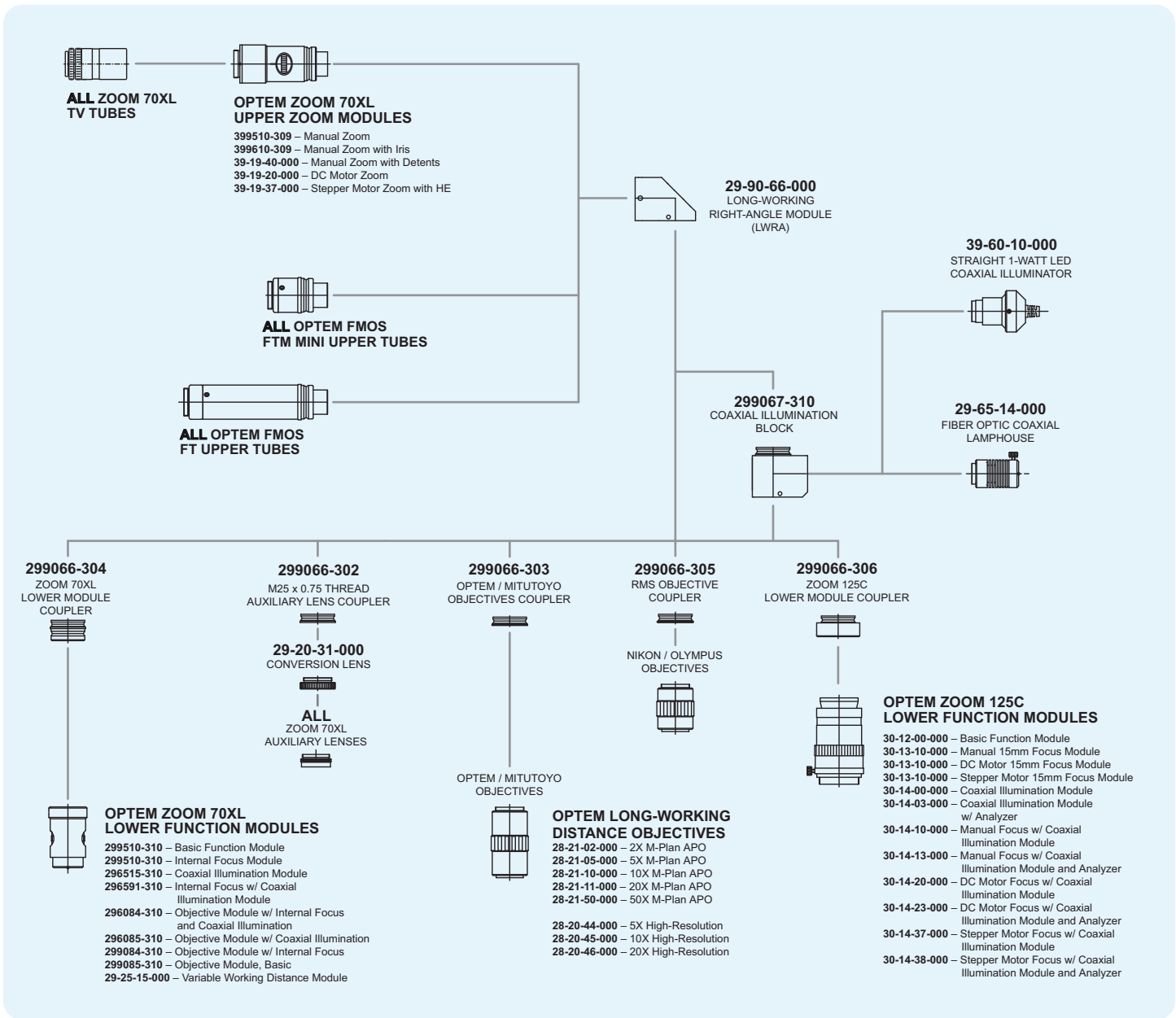
The Long-Working, Right-Angle (LWRA) Module integrates directly below all Zoom 70XL Upper Zoom Modules or FMOS Upper FT or FTM Tubes. A variety of Lower Module Couplers affords the added flexibility to integrate a myriad of bottom module options including all Zoom 70XL and FMOS Lower Modules, plus the broader selection of Zoom 125C Lower Function Modules for added versatility (see reverse).



If added magnification is required, LWRA integrates with Fine Focus Objective Lower Modules, or can economize space with a direct connection to the Objective. The optional Coaxial Illumination Block affords further space savings when coaxial illumination is required.

# Optem Long-Working, Right-Angle Module Integration Diagram

Refer to the respective Optem Lens Brochures and System Diagrams for detailed component options with the LWRA Module.



The Optional Coaxial Illumination Block 299067-310 offers compact integration of through-lens illumination and is compatible with the NEW Optem LED Coaxial Illuminators, as well as conventional FMOS and Zoom 70XL Fiber Optic Coaxial Lamphouses.

It is recommended to integrate LWRA Module with FMOS Upper Tubes higher than FT60 to avoid vignetting. Some larger-format cameras may experience varying degrees of vignetting at low magnifications when combined with longer Lower Function Modules. It is best to keep the lens configuration as short as possible.

As with Optem Lens Systems, the LWRA Module is ideally designed for use with 1-in format C-mount cameras (or smaller). The LWRA Module results in a reversed image to your camera. If a corrected image is desired, integrate the LWRA Module with a Right-Angle TV Tube above Zoom 70XL Upper Zoom Modules. The LWRA Module itself features tapped mounting holes to streamline mechanical integration and improve image stability.

Make the right turn, Contact Qioptiq Imaging Solutions or the authorized Optem Lens dealer nearest you for more details and pricing.



Qioptiq Imaging Solutions

78 Schuyler Baldwin Drive  
 Fairport, NY 14450, USA  
 ph: (585) 223-2370  
 fx: (585) 223-3413

[www.qioptiqimaging.com](http://www.qioptiqimaging.com)